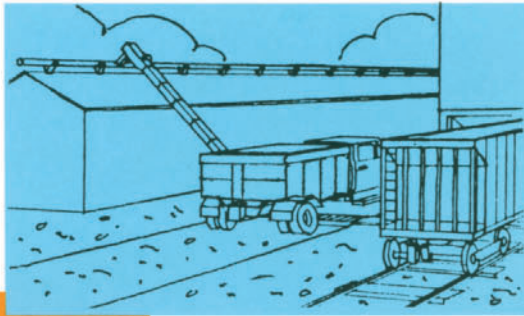
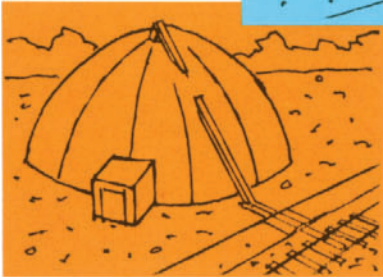


# WACONIA

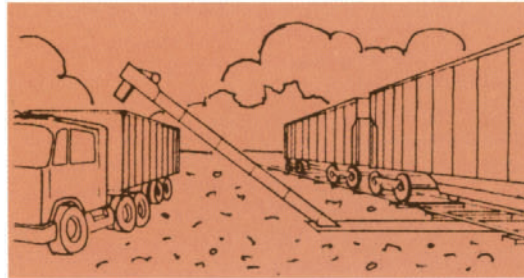
## WACONIA BULK CARRIER™ ENCLOSED DRAG CONVEYOR



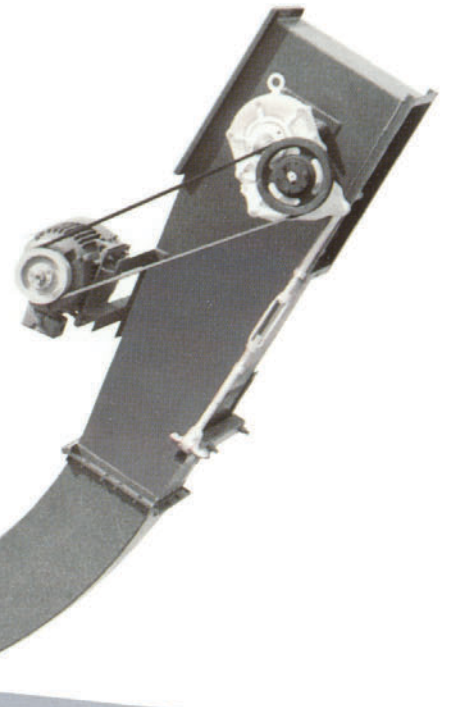
Fast, dependable load-in;  
direct to screw — no leg  
required.



Unload from rail or truck direct  
to top of dome.



Clean, efficient load-out  
direct to truck.



Two models available with  
capacities to 120 tph\*.

## Tough, versatile systems for dry material handling.

### Unmatched Flexibility.

Standard installation or custom, Waconia's Bulk Carrier can handle virtually any material conveying requirements you might have — practically dust free. Standard transitions from 0 to 60 degrees help simplify installations when space is limited. Capacities from 60 to 120 tph help get the job done fast.

### Day In, Day Out Reliability.

Built for heavy industrial use, the Bulk Carrier is constructed of #304 stainless steel (mild steel is available). High grade steel chain has stainless steel pins to help prevent chain freeze up. Two-piece intermediate trough sections improve access, simplifying inspection and routine maintenance.

### Minimal Material Degradation.

Waconia's bottom feed design provides greater capacity and enables slower chain speeds of 100 to 175 fpm. Slower chain speeds reduce friction, helping to prolong drive component life and keeping material damage to a bare minimum.

### Doesn't Need A Leg To Stand On.

Virtually any application that needs a leg can use a Bulk Carrier instead and get greater productivity. At the same time, downtime for routine maintenance is reduced by eliminating many of the components that would be present in a conveyor/leg system.

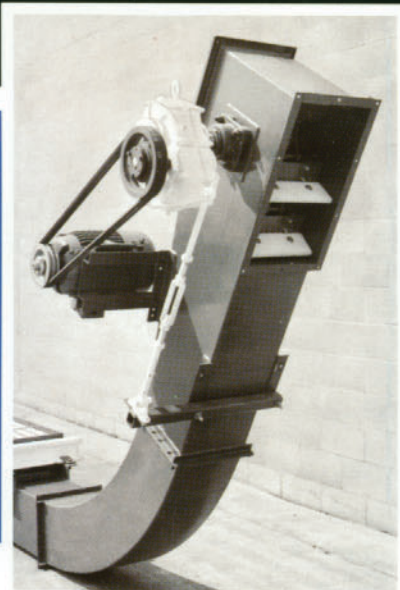
# WACONIA

Waconia Manufacturing  
33 East 8th Street, Waconia, MN (USA) 55387  
(612) 442-4450 Fax: (612) 442-5923

\*With 60# pcf material.

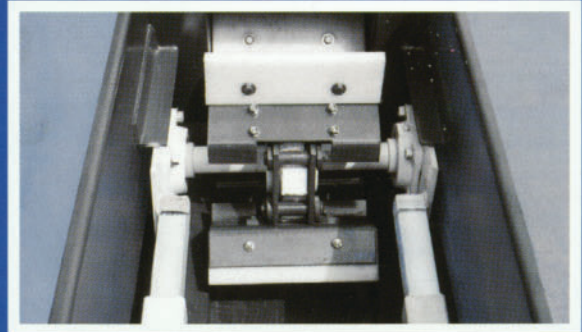
# WACONIA BULK CARRIER

## Specifications and Dimensions



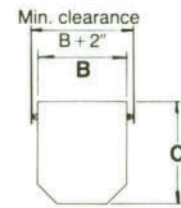
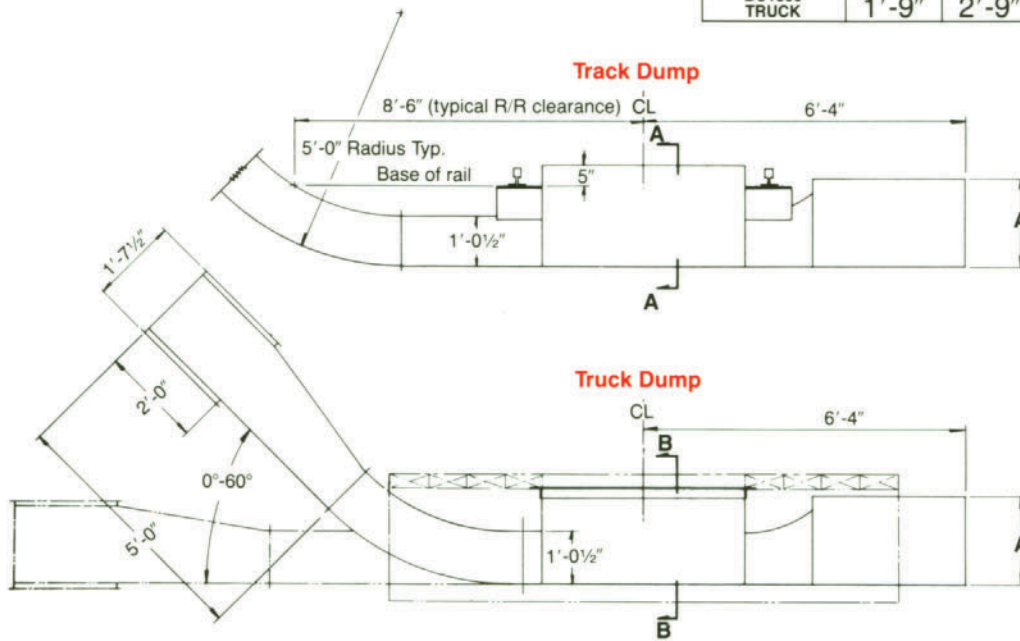
*Right* — Take-ups are fully enclosed and regreaseable. Flights are ¼" steel faced with UHMW paddles. Head and tail sprockets are chilled rim.

*Left* — Chemical duty, cast iron TEFC motor. Industrial duty gearbox.

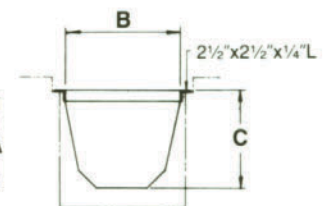


Top

MODEL	A	B	C	D	E
BC1200 TRACK	1'-9"	1'-9"	1'-9"	1'-0 <sup>3</sup> / <sub>8</sub> "	1'-9"
BC1800 TRACK	1'-9"	2'-3"	2'-0"	1'-6 <sup>3</sup> / <sub>8</sub> "	2'-3"
BC1200 TRUCK	1'-9"	2'-3"	1'-11"	1'-0 <sup>3</sup> / <sub>8</sub> "	1'-9"
BC1800 TRUCK	1'-9"	2'-9"	1'-11"	1'-6 <sup>3</sup> / <sub>8</sub> "	2'-3"



Section A-A



Section B-B

### Specifications

**Construction:** 10 ga #304 stainless steel or 3/16" plate mild steel  
**Chain:** High-grade steel with s.s. pins  
**Capacity:** BC-1200/60 tons per hour  
 BC-1800/120 tons per hour

**Motor:** 220/440V-3ph-60Hz, 1750 rpm  
**Sprockets:** Chilled rim (head and tail)  
**Grate and Hopper covers:** Supplied  
**Flights:** ¼" steel with UHMW paddles  
**Gearbox:** Industrial grade

### Options

Multiple outlets  
 Multiple feed points  
 Additional truck and/or rail hoppers  
 Electrical starter

Specifications subject to change without notice

DISTRIBUTED BY:

# WACONIA

Waconia Manufacturing

33 East 8th Street, Waconia, MN (USA) 55387

(612) 442-4450 Fax: (612) 442-5923

PRINTED IN U.S.A.