



**BLENDING AND HANDLING
EQUIPMENT FOR BULK
MATERIALS**

WALCONIA

Whether you're building a new plant or improving an existing facility . . . whether your plant is serviced by truck or rail . . . **you won't find more competent people to design, build, install and support your materials handling equipment** than the team at Waconia Manufacturing.



CAD systems let us quickly and inexpensively modify standard designs so we can custom-manufacture equipment to your exact needs.





Every operation is unique. That's why it's so critical to select materials handling equipment designed for your plant's layout, volume, regulatory concerns and more. **Understanding your individual needs and unmatched expertise in the use and application of various equipment** is where Waconia's experience really pays off. From the day our engineers measure your site, through final installation, **our goal is your 100% satisfaction.**

*"Experience is a tool
that's too important to overlook."*



BULK CARRIER Direct to screw conveyor . . . no bucket elevator required! Fully enclosed, lengths to 150', up to 250 tph.



CHAIN CONVEYOR Stainless-steel chain, even-flo gate, fully enclosed, truck and/or rail, up to 90 tph.



PAYLOAD HOPPER Can be custom designed to your front-end loader's capacity, stainless or mild steel.



WOOD-BOX CONVEYOR Economical, 12", 14" or 16" dia. auger, up to 120 tph.



SCREW CONVEYOR Fully enclosed, 12", 14" or 16" dia. auger, up to 120 tph.



GRAVITY TRIPPER Uses gravity to spread material in bins, tri-directional.



BUCKET ELEVATORS Engineered to perform and last, up to 800 tph. Also basket valves, distributors, spouting and accessories.



TRIP SLINGER "Slings" material horizontally for more even filling, maximizes bin capacity, bi-directional, 3 hp.



SHUTTLE-BELT CONVEYOR Under-slung drive, tri-roller idlers, bi-directional, up to 250 tph.



BULK CONDITIONER Breaks up hard, lumpy material for more uniform blending and trouble-free application, up to 250 tph.

Waconia's **Tower Blender** is so versatile it's hard to say what features you'll appreciate most... **but what it will do for your bottom line** is why you'll decide to install one.

... **Take speed for example.** Think how much smoother your operation will run if the batch is ready before your driver weighs the truck. Imagine having an "easy" 750-ton day!

... **Or maybe the material accountability, invoicing and reports** the system provides are what you'll appreciate most.

... **Then again, you may be swayed by the exceptional blend quality** and how easy it is to impregnate and custom formulate small batches.



DIRECT-DRIVE ORBITAL BLENDER Unsurpassed blend quality and reliability.



TOWER BLENDER The ultimate in speed, versatility and blend quality. Available with 4, 6 or 8-ton batch blender, up to 150 tph.



COMPUTER BATCHING SOFTWARE Easy to use. Totally automates batch design, invoicing & more (optional).

"With the tower, we went from eating dust and being covered with dust...to a shirtsleeve operation."

TOWER BLENDER

BUCKET ELEVATORS

Stainless or mild steel. Heavy-duty construction throughout. 60 to 800 tph capacities.

DISTRIBUTORS

Available with remote manual-positioning and electric readout or fully electric-positioning and readout.

BINS

Up to 200-ton holding capacity. Standard models in 6 and 9-bin configurations. High/low bin-level indicators.

VALVES

Electric-actuated, air-cylinder gate control for accurate weights. Dust-tight gates and scale-hopper connection with air return for dust-free operation.

SCALE HOPPER

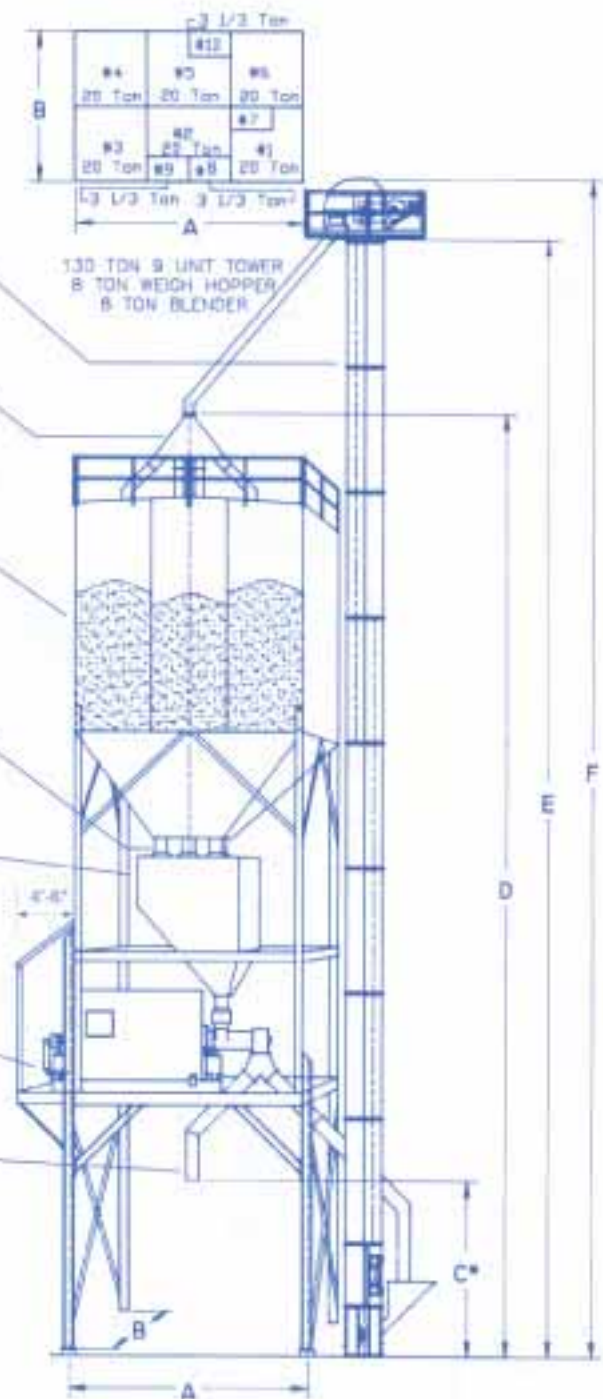
Totally enclosed with quick-access door. Std. models have digital indicator and single load-cell (printer optional). NTEP certified.

BATCH BLENDER

Choose orbital in 4, 6 & 8-ton or vertical in 6, 8, 10 & 12-ton. Dust-tight blending, positive discharge.

DISCHARGE

Direct to truck. Optional valve allows discharge to bucket elevator for re-elevating to holding or bagging bins.



Whichever model you select, you won't find a **faster, better engineered, more reliable tower.**

MODEL 90-9	MODEL 120-6	MODEL 130-9	MODEL 150-6 / 150-9	MODEL 200-9*
6 Bins - 13 1/2 Tons Ea. 3 Bins - 3 1/2 Tons Ea.	6 Bins - 20 Tons Ea.	6 Bins - 20 Tons Ea. 3 Bins - 3 1/2 Tons Ea.	6 Bins - 25 Tons Ea. (150-6) 6 Bins - 23 1/2 Tons Ea. (150-9) 3 Bins - 3 1/2 Tons Ea. (150-9)	6 Bins - 25 Tons Ea. 1 Bin - 40 Tons 2 Bins - 5 Tons Ea.
A. 16'-0"	A. 18'-0"	A. 18'-0"	A. 18'-0"	A. 16'-0"
B. 12'-0"	B. 12'-0"	B. 12'-0"	B. 12'-0"	B. 20'-0"
C. 14'-0"	C. 14'-0"	C. 14'-0"	C. 14'-0"	C. 15'-6"
D. 68'-8"	D. 73'-8"	D. 75'-6"	D. 78'-8"	D. 93'-5"
E. 81'-0"	E. 86'-0"	E. 91'-0"	E. 96'-0"	E. 106'-0"
F. 87'-0"	F. 92'-0"	F. 97'-0"	F. 102'-0"	F. 111'-0"

*Model 200-9 requires 2, 10-ton vertical blenders with scale hoppers or 1, 8-ton orbital blender.

Dimensions calculated with 8-ton orbital blender (Model 200-9 with 10-ton vertical).

C dimension allows sufficient space for installation of Waconia **Dust Devil**.

F dimension will vary with location of bucket elevator to tower.

SPECIFICATIONS

BUCKET ELEVATOR



Trunking Dimensions

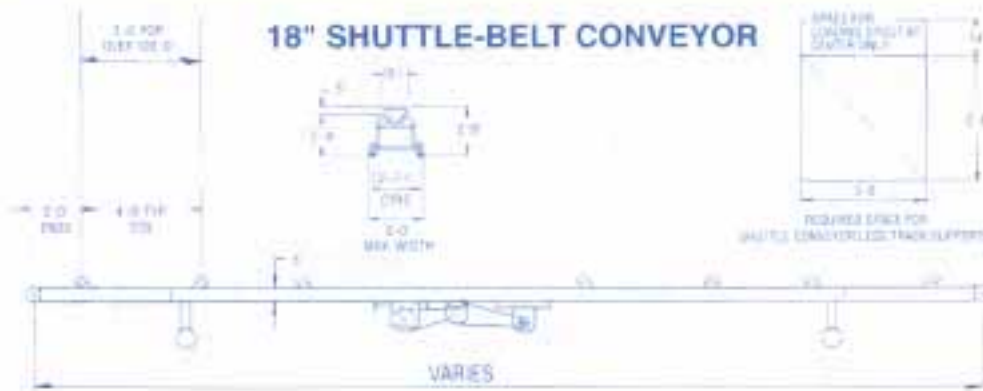
Necessary Dimensions

Dimension	1610 90 TPH	2012 120 TPH	2412 150 TPH	2413 165 TPH	2415 200 TPH
A	MAX. 59'-0"	AS REQ'D	AS REQ'D	AS REQ'D	AS REQ'D
B	4'-0"	4'-0"	4'-0"	4'-0"	4'-0"
C*	3'-5 1/2"	3'-8"	3'-10"	3'-10"	3'-10"
D*	3'-2"	3'-4 1/2"	3'-6 1/2"	3'-6 1/2"	3'-6 1/2"
E	5'-0 1/4"	5'-11"	6'-9 1/4"	6'-9 1/4"	6'-9 1/4"
F	13 1/2"	14"	14"	15"	17"
F1	14 1/2"	17 1/2"	17 1/2"	18 1/2"	20 1/2"
G	2'-10"	3'-3 1/2"	3'-7 1/2"	3'-6"	3'-6"
G'	3'-1 1/2"	3'-6 1/2"	3'-10 1/2"	3'-9 1/2"	3'-9 1/2"
BUCKET SIZE	8' x 6'	10' x 6'	10' x 6'	11' x 6'	13' x 8'
CUP CENTERS	7'-0"	8"	8"	8"	7"

For capacities over 200 tph please consult factory.

* When feeding leg from side use a 45° slope on boot hopper. Increase C & D dimension by 3".

18" SHUTTLE-BELT CONVEYOR



18" TRI-ROLLER CONVEYOR



Style	A	B	C	D	E	F	X	Y
Gravity	20'	2'-8"	-	14'-0"	-	2'-2"	3'-0"	2'-8"
Gravity 3-Way	3'-0"	4'-2"	-	18'-0"	-	2'-2"	4'-8"	4'-3"
Trip Slinger	21'	-	4'-10"	-	14'-0"	2'-2"	5'-0"	2'-8"
Trip Slinger w/ Gravity Tripper	2'-0"	2'-9 1/2"	6'-4"	-	18'-0"	2'-2"	6'-0"	3'-8"

WACONIA

WACONIA MANUFACTURING, INC.

33 East 8th Street, Waconia, MN (USA) 55387

(952) 442-4450 FAX: (952) 442-5923

www.waconiamfg.com