



**RECEIVING
SYSTEMS FOR
BULK MATERIALS**

WALCONIA



TRUCK & RAILCAR RECEIVING
 New or existing facility, we can design a complete system for unloading trucks, railcars or both.

- Totally enclosed to minimize dust.
- 60 to 300 tph* capacity.
- Flood feed hopper without worrying about overloading.
- Single car or unitrain.



HIGH-VOLUME RECEIVING

Low-profile overhead conveyors let you fill bins to capacity.

- Low horsepower — saves on electricity.
- Specially designed gate minimizes carryover.
- Low-profile design saves space. Gives you more flexibility!
- Use in new or existing facilities.
- 60 to 300 tph* capacity.



BUCKET ELEVATORS
 Free-standing bucket elevators with a 30-year reputation for reliability.

- Gearbox or jackshaft drive.
- OSHA approved ladder and cage.



- Head section shipped fully assembled.
- Boot pulley monitors available.
- Extra-large service platform is welded on at the factory.
- Quick-release inspection doors.
- Valve or distributor platform.
- 60 to 300 tph* capacity.



GREAT FLEXIBILITY

Multiple grates and hoppers for truck receiving and/or payloader filling.

- Recessed for easy cleanup.
- Designs for your existing building.
- Maximize productivity from your people and your plant!



DUST DEVIL

Economical & practical dust control!

- Extends to 10'4" — collapses to 25".
- Tough, 11" to 18" diameter spouts made of flexible urethane.
- Manual or electric models.
- Use with virtually any free-flowing materials.



HORIZONTAL DRAG CONVEYORS

Standard features many competitors don't offer as options!

- One-piece take-up for easy service.
- Shaft-mount reducers.

- Open-barrel pintel chain & UHMW flights.
- TEFC motors.
- Stainless steel covers included.



PRODUCTIVITY = PROFIT **Waconia towers provide speed, capacity and accountability that's unmatched!**

- Overhead storage from 60 to 240 tons!
- 4 to 13 separate bins!
- 60 to 150 tph throughput.
- Single and two-blender designs.
- Controls can be mounted at a remote site up to 200 feet away.
- Manual or totally computerized.



INCLINE BULK CARRIER

Look all you want, you won't find a better design!



- Over 3,000 installations worldwide.
- Inclines up to 60 degrees.
- Flood feed hopper without worrying about overloading.
- Divider plates are bolted in (not welded) so they can be replaced. Abrasion resistant or stainless steel.
- Enclosed take-ups simplify service.
- Variety of chain and paddle options.
- Totally sealed against water infiltration. Bury in the dirt, no concrete pit required!



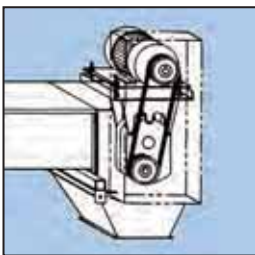
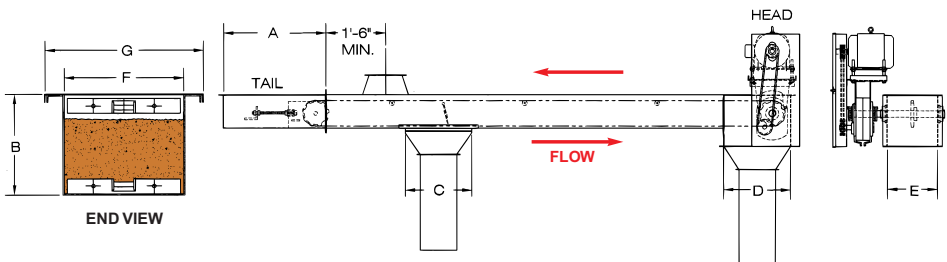
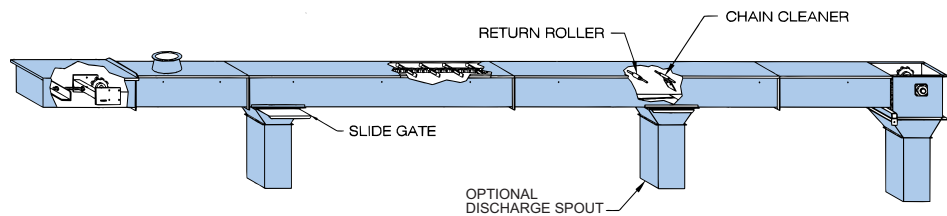
ELEVATED OFFICE WITH A VIEW

- Insulated for sound and air conditioned.

ALLEY DRAG CONVEYOR

- Extra-wide floor grate for fast, easy and safe unloading

MODELS DC-1210, DC-1214 & DC-1614
ENCLOSED OVERHEAD DRAG CONVEYORS



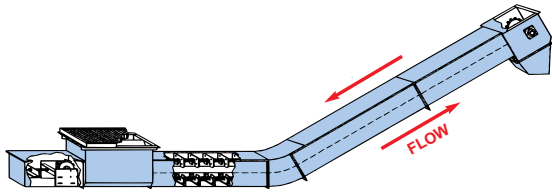
Shaft Mounted Reducer

	A	B	C	D	E	F	G
DC-1210	2'-7"	10"	20"	20"	15"	12"	16"
DC-1214	3'-6"	14"	30"	22"	15"	12"	16"
DC-1614	3'-6"	14"	30"	22"	19"	16"	20"

SPECIFICATIONS

Construction: Head — 3/16 #304 ss Motor: 220/440V - 3 ph - 60 hz, 1750 rpm
 Tail — 10 ga #304 ss Sprockets: Hardened tooth (head and tail)
 Trough — 12 ga #304 ss Chain: Heavy duty open barrel pintle chain
 Gearbox: Industrial grade Flights: UHMW paddles
 Capacity: DC-1210 → 60 to 120 tons per hour*
 DC-1214 → Up to 200 tons per hour*
 DC-1614 → Up to 250 tons per hour*

DC-1219, DC-1419, DC-1621 & DC-2021
ENCLOSED DRAG CONVEYORS



Rail and truck direct to top of dome.



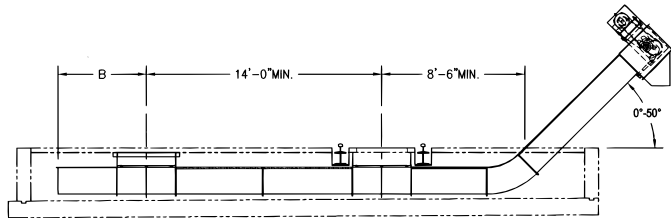
Load-in direct to screw — no leg required.



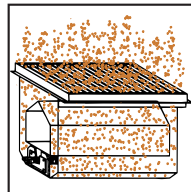
Load-out direct to truck.

MODELS BC-1200 & BC-1800
ENCLOSED DRAG CONVEYORS

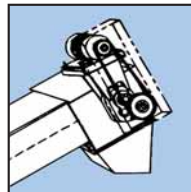
WACONIA BULK CARRIER™



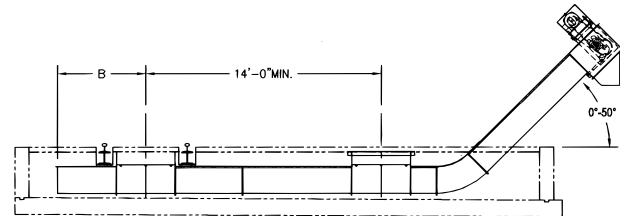
TRUCK & TRACK



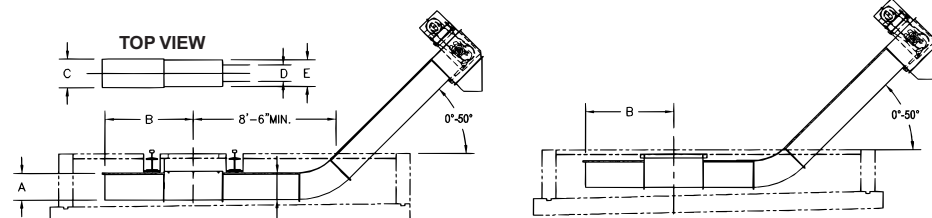
Flood-Feed Inlet Hopper



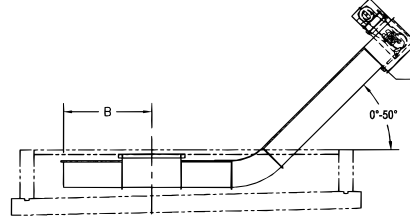
Shaft Mounted Reducer



TRUCK & TRACK



TRACK



TRUCK

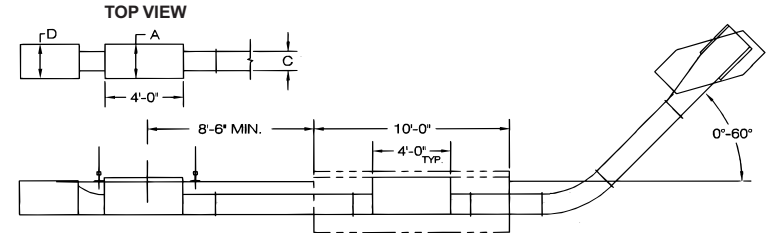
SPECIFICATIONS

Construction: Head — 3/16" #304 ss
Tail — 10 ga #304 ss
Trough — 12 ga #304 ss
Chain: #88 or #308 open barrel high grade steel
Capacity: DC-1219 → 150 tons per hour*
DC-1419 → 200 tons per hour*
DC-1621 → 250 tons per hour*
DC-2021 → 300 tons per hour*

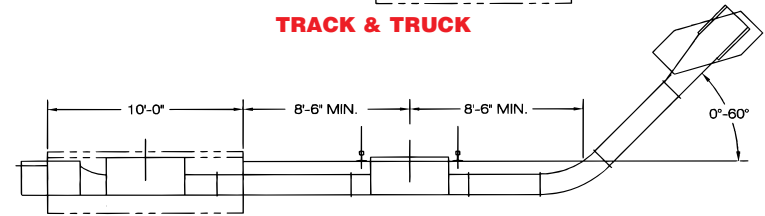
Motor: 220/440V - 3 ph - 60 hz, 1750 rpm
Sprockets: Hardened tooth (head and tail)
Flights: UHMW paddles
Gearbox: Industrial grade
Covers: Grate & hopper covers supplied

OPTIONS
Additional truck and/or rail hoppers
Multiple inlets

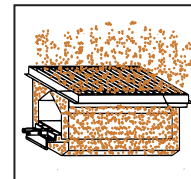
	A	B	C	D	E	F
DC-1219	1'-7"	5'-3"	1'-9"	1'-0"	1'-7"	1'-7"
DC-1419	1'-7"	5'-4"	1'-9"	1'-2"	1'-9"	1'-7"
DC-1621	1'-9"	5'-1"	2'-2"	1'-4"	2'-4"	1'-9"
DC-2021	1'-9"	5'-7"	2'-6"	1'-8"	2'-8"	1'-9"



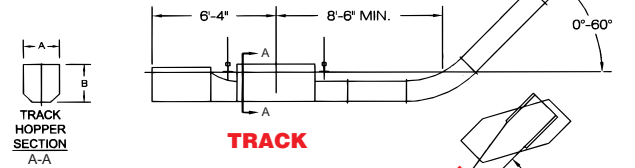
TRACK & TRACK



TRUCK & TRACK



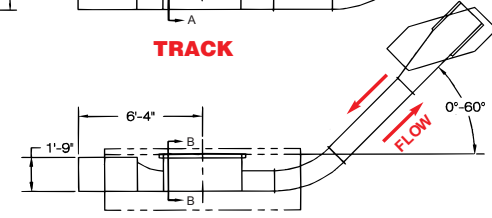
Flood-Feed Inlet Hopper



TRACK

TRACK HOPPER SECTION A-A

TRUCK HOPPER SECTION B-B



TRUCK

SPECIFICATIONS

Construction: Head — 3/16" mild steel or ss
Tail — 3/16" mild steel or 10 ga. ss
Sprockets: Chilled rim (head and tail)
Covers: Grate & hopper covers supplied

Motor: 220/440V - 3 ph - 60 hz, 1750 rpm

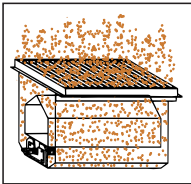
Chain: #102-B High grade steel with s.s. pins
Flights: BC-1200 — 1/4" steel with UHMW paddles
BC-1800 — UHMW paddles
Gearbox: Industrial grade
Capacity: BC-1200 → 90 tons per hour*
BC-1800 → 120 tons per hour*

OPTIONS
Additional truck and/or rail hoppers
Multiple outlets
Multiple feed points

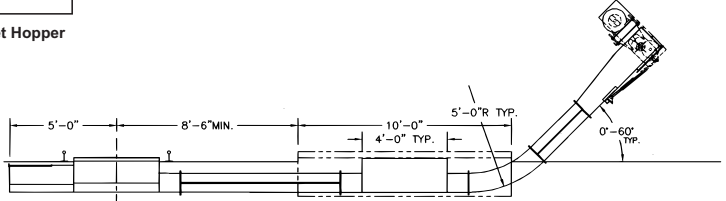
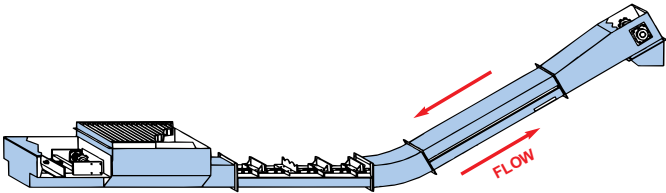
	A	B	C	D
BC-1200 TRACK	1'-9"	1'-9"	1'-1"	1'-9"
BC-1800 TRACK	2'-3"	2'-0"	1'-7"	2'-3"
BC-1200 TRUCK	2'-3"	1'-11"	1'-1"	1'-9"
BC-1800 TRUCK	2'-9"	1'-11"	1'-7"	2'-3"

MODEL BC-1200-SP
ENCLOSED DRAG CONVEYOR

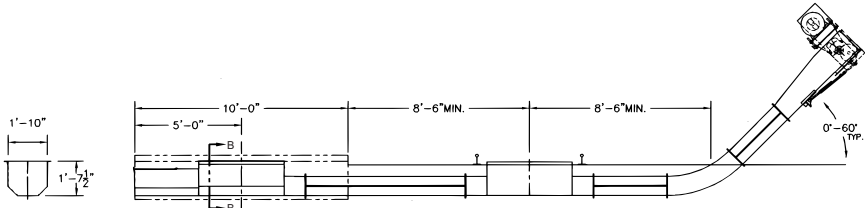
WACONIA BULK CARRIER™



Flood-Feed Inlet Hopper

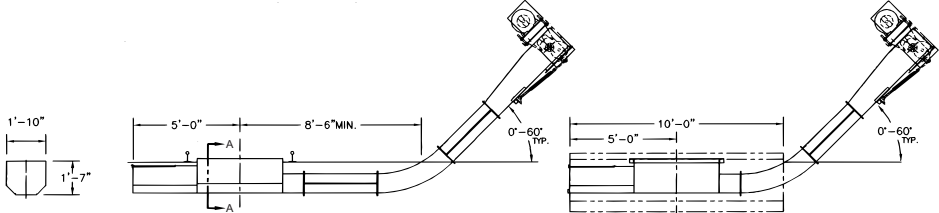


TRACK & TRUCK



Truck Hopper Section B-B

TRUCK & TRUCK



Track Hopper Section A-A

TRACK

TRUCK

SPECIFICATIONS

- | | |
|--|--|
| Construction: 12 ga #304 stainless steel | Motor: 220/440V - 3 ph - 60 hz, 1750 rpm |
| Chain: #188 high grade steel with s.s. pins | Covers: Grate & hopper covers supplied |
| Sprockets: Chilled rim (head and tail) | |
| Gearbox: Industrial grade | |
| Flights: UHMW paddles with 2 steel cleaner paddles | |
| Capacity: 50 - 90 tons per hour* | |

OPTIONS

- Multiple outlets
- Multiple feed points
- Additional truck and/or rail hoppers

**PLANT AND PROCESS DESIGN,
ENGINEERING AND EQUIPMENT
FOR FERTILIZER.**

**ANY CAPACITY.
ANYWHERE IN THE WORLD!**

*Waconia Manufacturing
World Headquarters*

- Receiving and Handling Equipment
- Blend Systems — Floor and Tower
- Dry Fertilizer Systems
- Delumping and Bagging Systems
- Fertilizer Plant Design, Installation and Start-Up

* Based on 60 PCF material.
Specifications subject to change without notice.

Distributed By:

WACONIA

WACONIA MANUFACTURING, INC.

33 East 8th Street • Waconia, MN (USA) 55387
(612) 442-4450 • FAX (612) 442-5923

Printed in USA