



DUST DEVIL!™



STOP EATING DUST!

Dust Devil is a simple, affordable way to minimize dust when discharging free-flowing materials. It will improve your work environment by reducing dust in and around your facility. And it will help keep your trucks, your lungs and everything else cleaner.

Installation and operation are easy! You can install a Dust Devil on the end of a conveyor or discharge spout in about an hour. To operate, simply lower the spout and start filling, raising the spout periodically so it stays close to the top of the pile.

- Ideal for cement, grain, fertilizer, pesticides, salt, sand, saw dust, sugar and more.
- Available with manual winch or electric winch.
- Electric winch model uses a 3/4 HP TEFC motor and drive.
- Spout height can be controlled at the point-of-loading.
- Flexible polyethylene spouts will last for years.

WACONIA

WACONIA MANUFACTURING, INC.

33 East 8th Street, Waconia, MN (USA) 55387

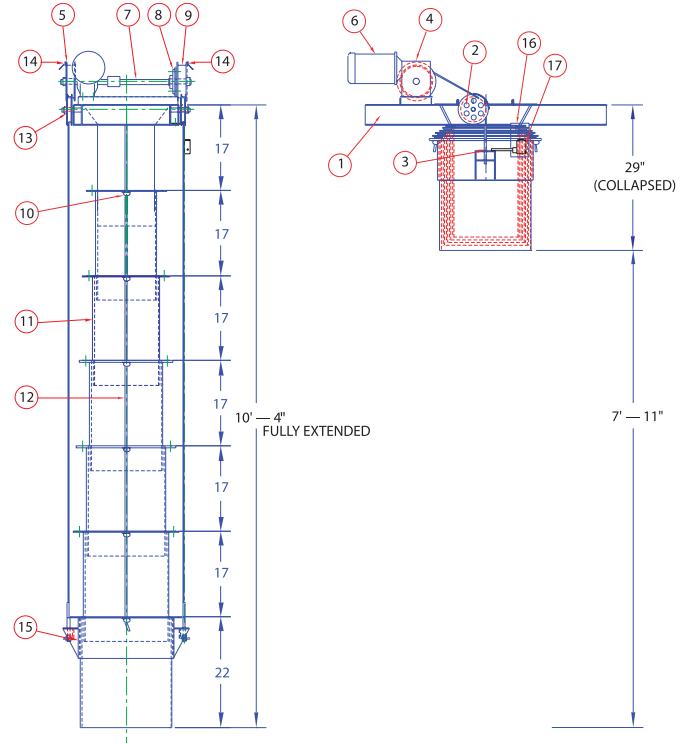
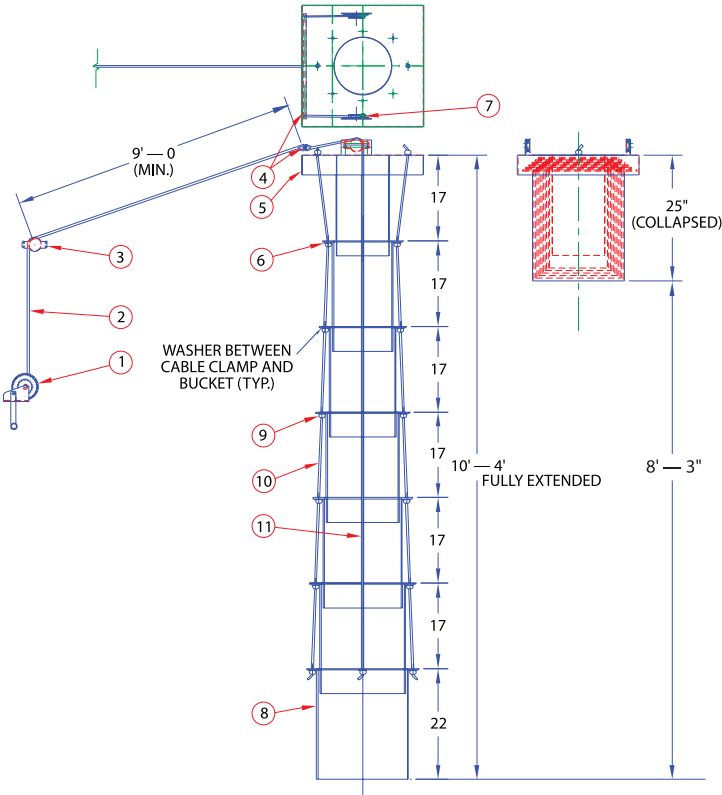
(952) 442-4450 Fax: 952-442-5923 • www.waconiamfg.com



DUST DEVIL!

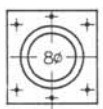
MANUAL WINCH MODEL

ELECTRIC WINCH MODEL

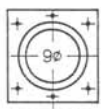


ITEM	QTY	PART#	DESCRIPTION
1	1	3001046	Winch, Dust Devil 1000#
2	1	3001059	Rope, 5/16 X 20'-0 Braided
3	1	---	Pulley (Optional)
4	1	---	Pipe 1/2" per D7011440 Sheet 2 OF 2
5	1	7011654	Dust Spout Top per D7011440 2 OF 2
6	16	---	Washer, 3/8 SST
7	2	7001074	Pulley, Side Mount
8	--	D7011198	Bucket Details
9	14	3001069	Cable Clamp
10	2	3001059	Rope, 5/16 x 9'-0 Braided
11	2	3001059	Rope, 5/16 x 11'-0 Braided

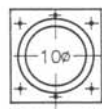
ITEM	QTY	PART#	DESCRIPTION
1	1	D7011661	Dust Spout Weldment (Electric)
2	2	3000626	Wheel Dust Devil 3/4 Bore
3	2	7011478	Cable, 3/16 SST 9'-10 Swag End
4	1	---	Reducer A/L 26 UF-2-56C-80 80:1
5	1	7011662	Wheel, Cable w/1-1/8 Set collar
6	1	3001080	Motor 3/4 HP 1800 C Face VM 3542
7	1	7011664	Shaft 1"Ø w/1" to 1-1/8 Coupling
8	1	7000708	Bearing, 1"Ø 2 Bolt Flg.
9	1	7011663	Wheel, Cable w/1" Set Collar
10	12	3001069	Clamp 3/16 Cable
11	1	7011198	Bucket, Details
12	2	3001059	Rope 5/16Ø Nylon 9' LG
13	2	8062094	3/4" SST 2-Piece Set Collar
14	2	7001383	Clamp 3/16 Cable
15	1	7011665	Bottom Section
16	1	B7020897	Micro Switch Mounting Bracket
17	1	3001560	Micro Switch w/Coil Spring Wobble Lever #BFL1-AW2



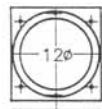
8" ADAPTER
P/N-7011446



9" ADAPTER
P/N-7011447



10" ADAPTER
P/N-7011448



12" ADAPTER
P/N-7011449



ADAPTER LOAD OUT CHUTE
P/N-7011442

WACONIA

WACONIA MANUFACTURING, INC.

33 East 8th Street, Waconia, MN (USA) 55387

(952) 442-4450 Fax: 952-442-5923 • www.waconiamfg.com